



KAMARAJ IAS ACADEMY
Only IAS Academy by Grandson of "Perunthalsivam Kamarajar"

Sigur elephant corridor

Published On: 28-08-2023

Why is in news? Conservationists criticise appeal to reduce area of private lands demarcated as part of Sigur elephant corridor

A recent appeal by lobbyists for resort and business owners in Sigur plateau to reduce the extent of private lands demarcated as part of the notified Sigur elephant corridor has been criticised by experts and conservation biologists studying the movement of the animals in the region.

The corridor is situated in the **ecologically fragile Sigur plateau**, which **connects the Western and the Eastern Ghats** and **sustains elephant populations** and their genetic diversity.

It has the Nilgiri Hills on its southwestern side and the Moyar River Valley on its north-eastern side.

The elephants cross the plateau in search of food and water.

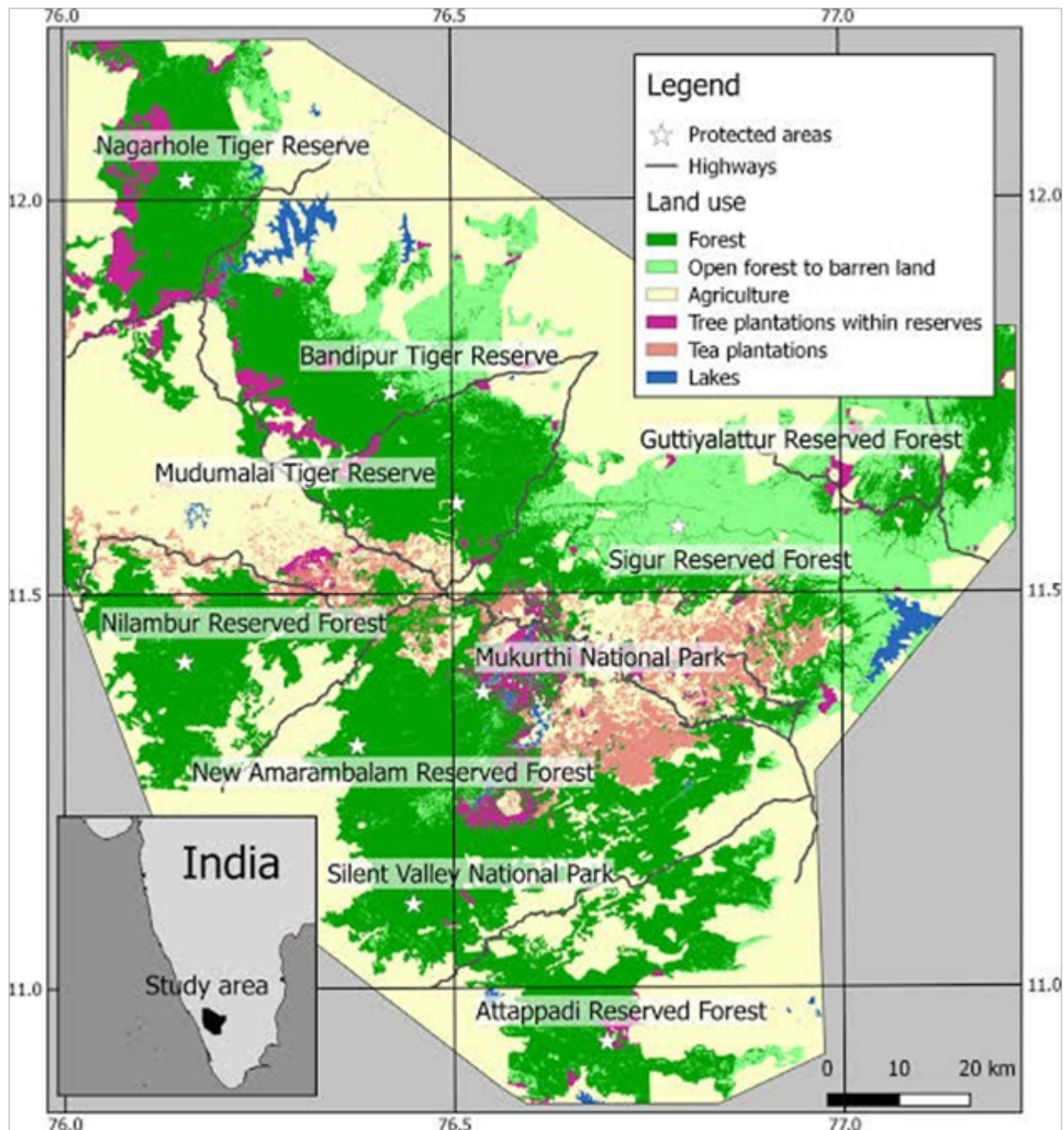
Sigur Plateau (Segur Plateau) is a plateau in the north and east of Nilgiri District in the Nilgiri Hills of Tamil Nadu, South India.

The Nilgiri Biosphere Reserve, which includes Sigur Plateau and the Nilgiri Hills, is part of the UNESCO World Network of Biosphere Reserves.

Kamaraj IAS Academy

Plot A P.127, AF block, 6 th street, 11th Main Rd, Shanthi Colony, Anna Nagar, Chennai, Tamil Nadu 600040

Phone: **044 4353 9988 / 98403 94477** / Whatsapp : **09710729833**



Elephant Corridors:

Elephant corridors are narrow strips of land that connect two large habitats of elephants.

Elephant corridors are crucial to reduce animal fatalities due to accidents and other reasons.

So fragmentation of forests makes it all the more important to preserve migratory corridors.